

Verto Homes

The Sunday Times

12 August 2018

Circulation: 734,315

2 August 12, 2018 The Sunday Times

Home

INSIDE THIS WEEK

Best Places to Live: your verdict

4

The hottest new home trend: a van

6

Buy into the Med's trendiest island

16

PLUS Home Help **14** How to... supercharge your broadband **15** Gardening **20** Time and Space **22**

MAKING MOVES



CHESHIRE
£1.5M

More futuristic lair than converted barn — yes, this was once an agricultural building — this five-bedroom home is in Clotton Hoofield, a 20-minute drive from Chester. The 3,455 sq ft of open-plan living space is set within a steel frame with huge expanses of largely glass walls. It's hi-tech, as you would expect, and you get more than an acre of gardens — along with more traditional views of rural Cheshire. Head to the neighbouring village of Tarporley for posh welly boots and good pubs. **01244 409660**, fishergerman.co.uk





Ampney Park, Gloucestershire

ESTATE OF THE ART

Discover a unique selection of luxurious properties from around the world

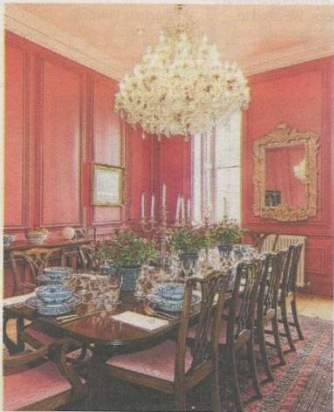
Refine your search
mansionglobal.com/london

MANSION GLOBAL

In partnership with
THE SUNDAY TIMES

LINCOLNSHIRE
£3.45M

Harmston Hall, six miles from Lincoln, is a grade II* listed 20,000 sq ft Queen Anne house, for sale with 13 acres included in the price. Overhauled by the FIA Masters Historic Formula One champion and property developer Peter Sowerby, the 14-bedder — once a mental health institution — has plenty of va-va-voom. When he bought it in the late 1990s, Sowerby got his builder's goat to chomp through the vegetation blocking the grand front door. Today, the facade is pristine, and the balustraded, terraced gardens rediscovered. Inside, renovations include the unification of several top-floor rooms into one smart suite. Features include a rococo fireplace and a billiards room with carved mahogany panelling, though, as you would hope, there is also a James Bond-worthy underground garage, and planning consent in place for another. Views are over parkland — and you can buy another 30 acres for a further £500,000. 01522 508908, savills.co.uk



BEST PLACES TO LIVE 2018

WANTED TO MAKE LONDON HOME? HEALTHY

FIND A PLACE TO CALL HOME

City buzz or rural bliss? See all 106 of the Sunday Times Best Places to Live at [thesundaytimes.co.uk/bestplaces](https://www.sundaytimes.co.uk/bestplaces)

ISLE OF WIGHT
£565,000



You get uninterrupted views over fields to the island's spectacular southwest coastline — and even a catch of salty sea breezes — from this detached four-bedroom thatched stone cottage, which dates back to the 1550s. Near

Chale, and about seven miles from Ventnor, a Victorian spa resort with its own microclimate, it has exposed beams, an old bread oven and lots of cool, quiet nooks for reading. 01983 872335, [bilesandco.co.uk](https://www.bilesandco.co.uk)

CORNWALL
FROM
£245,000



The designers at Hilgrove Mews must have had stylish surfer types in mind: the new development by the innovators Verto Homes features 40 flats, townhouses and semis, a Frisbee's throw from Tolcarne Beach, in Newquay, with

a minimalist feel and all run on clean energy. Plus there's lots of storage for your retro fish and soft top (they're boards). Two-bedders from £245,000. 01872 672927, [hilgrovemews.co.uk](https://www.hilgrovemews.co.uk)

CORNWALL
FROM
£245,000



The designers at Hilgrove Mews must have had stylish surfer types in mind: the new development by the innovators Verto Homes features 40 flats, townhouses and semis, a Frisbee's throw from Tolcarne Beach, in Newquay, with

a minimalist feel and all run on clean energy. Plus there's lots of storage for your retro fish and soft top (they're boards). Two-bedders from £245,000.

01872 672927,
hilgrovemews.co.uk